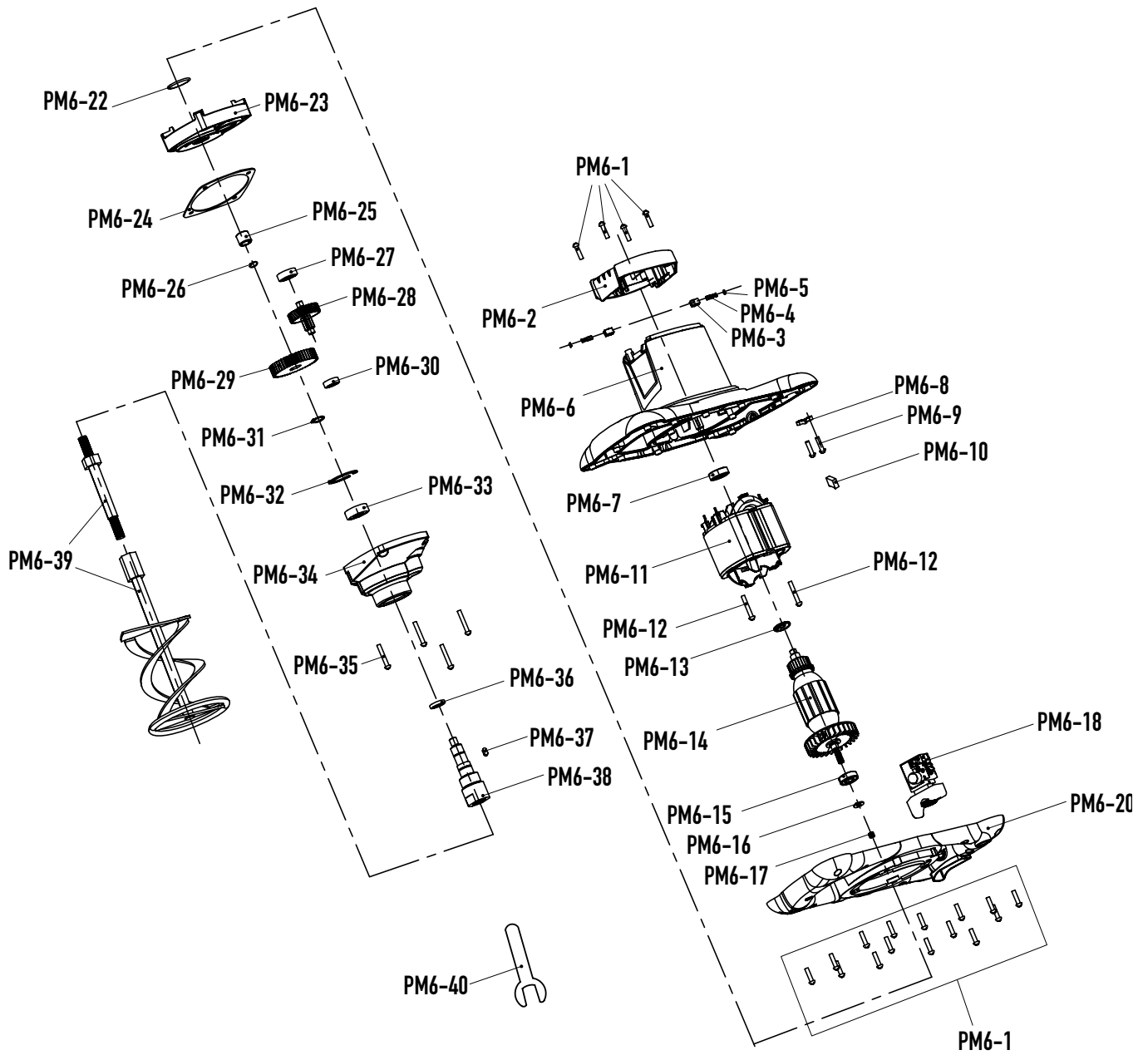


Parts Diagram and List



No	Parts Name	Qty
PM6-1	Screw	19
PM6-2	Back cover	1
PM6-3	Brush holder	2
PM6-4	Carbon brushes	2
PM6-5	Carbon brushes cap	2
PM6-6	Housing	1
PM6-7	Bearing (608)	1
PM6-8	Cable plate	1

PM6-9	Screw	2
PM6-10	Capacity	1
PM6-11	Stator	2
PM6-12	Screw	2
PM6-13	Rotor insulator	1
PM6-14	Rotor	1
PM6-15	Bearing	1
PM6-16	Wool washer	1

Parts Diagram and List (continued)

No	Parts Name	Qty
PM6-17	Spring	1
PM6-18	Switch	1
PM6-20	Handle cover	1
PM6-22	O-ring washer	1
PM6-23	Middle cover	1
PM6-24	Paper washer	1
PM6-25	Needle bearing	1
PM6-26	Circlip	1
PM6-27	Bearing (627)	1
PM6-28	Secondary Gears	1
PM6-29	Large gears	1
PM6-30	Bearing (607)	1

PM6-31	Elastic collar 15	1
PM6-32	Elastic collar 32	1
PM6-33	Bearing (6002)	1
PM6-34	Gearbox	1
PM6-35	Screw	4
PM6-36	Oil seal	1
PM6-37	Key	1
PM6-38	Output shaft	1
PM6-39	Supa Mixer Blade	1
PM6-40	Spanner	2