

TROUBLESHOOTING

Problem - The Box is leaving edges.

Cause - The Flat Box blade is not correctly adjusted.

Solution - Check the Flatbox blade is set 1 – 1.5mm above the skids. This setting can be done by tightening the AT042 on the side of the brass blade holder.

Problem - The joint compound has a pothole effect.

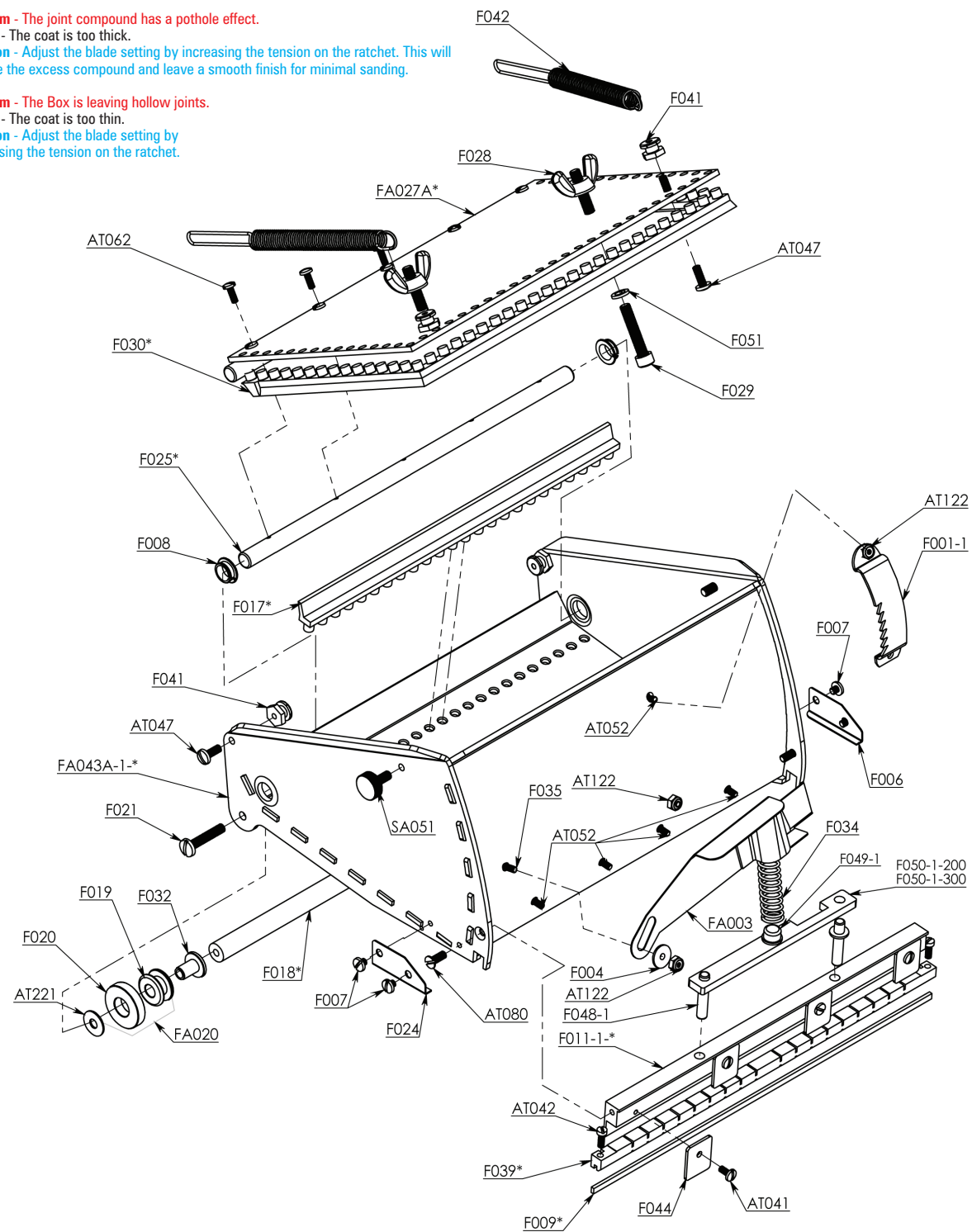
Cause - The coat is too thick.

Solution - Adjust the blade setting by increasing the tension on the ratchet. This will remove the excess compound and leave a smooth finish for minimal sanding.

Problem - The Box is leaving hollow joints.

Cause - The coat is too thin.

Solution - Adjust the blade setting by decreasing the tension on the ratchet.



TAPEPRO
DRYWALL TOOLS

TAPEPRO
DRYWALL TOOLS



TAPEPRO FLATBOX

For further information contact: Tapepro Drywall Tools Pty Limited | 2/44 Dover Drive, Burleigh Heads QLD 4220 Australia
Phone: +61 7 5520 6022 Fax: +61 7 5520 5973 Email: info@tapepro.com Website: www.tapepro.com

TAPEPRO FLATBOX



The Tapepro Flatboxes are designed to apply the correct amount of joint compound over taped, flat joints when used in conjunction with a Tapepro Flatbox Handle. The Tapepro Loading Pump and Flat Box Filler Nozzle are also available to make filling your flatbox quicker and easier.

The Tapepro Flatbox range includes:

- > 200mm Tapepro Flatbox (second coat)
- > 250mm Tapepro Flatbox (finish coat)
- > 300mm Tapepro Flatbox (finish coat)

BEFORE USE

- > Make sure the Tapepro Flatbox blade is the thickness of a fingernail (1 – 1.5mm) above the skids. The blade can be adjusted using screws on the blade holder to obtain the necessary height. **(FB-1)**
- > Test that the blade holder can move up and down freely.
- > Attach your Tapepro Flatbox Handle by sliding it onto the box and tightening the two wing nuts. **(FB-2)**
- > Adjust the tension on the blade holder to suit the gauge of compound which is to be used in the machine. **(FB-3)**

Compound can be loaded into the Tapepro Flatbox either with the aid of a Loading Pump and appropriate filler nozzle or by hand.

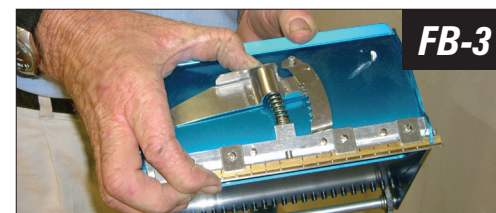
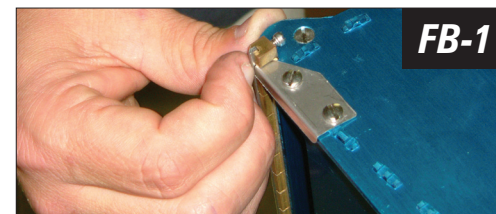
Loading with Pump

1. Attach the filler nozzle to pump.
2. Fit the nozzle into the slot on the bottom of the Tapepro Flatbox. **(FB-4)**
3. Pump the compound in to the Tapepro Flatbox, moving the box from side to side while pumping to ensure the compound is evenly distributed. Do not overfill.
4. Remove any excess compound from around the slot.

Loading by Hand

1. Open the lid.
2. Evenly fill the Tapepro Flatbox with compound using a joint knife. Do not overfill.
3. Close the lid.
4. Remove any excess compound.

1. Set the box at a slight angle from the handle and apply the brake so the head remains stationary.
2. Place the Tapepro Flatbox on the joint and while applying pressure, release the brake allowing the box and the handle to find its own natural position. **(FB-5)**
3. Run the machine along the joint applying pressure evenly to ensure a consistent finish. **(FB-6)**
4. Reapply the brake toward the end of the joint.
5. Remove the box from the wall in a sweeping motion about 300mm from the end of the joint.
6. Using the same technique, turn around, and coat the remaining 300mm of the joint. **(FB-7)**



Tip: The Tapepro Flatboxes can reach even higher with the addition of a Tapepro Handle Extension. The Tapepro Handle Extensions are threaded and fit easily in to both Tapepro and Premier Flatbox Handles. **(FB-8)**

CLEANING

Your Tapepro Flatbox should be cleaned after every use to maximise lifespan and maintain optimal performance.

Remove any compound from your Tapepro Flatbox with a hose and stiff brush. The Tapepro Flatbox can be dismantled for a more thorough clean when required. **(FB-9)**

MAINTENANCE

All replacement parts are available from your local plasterboard distributor or Tapepro Drywall Tools. For your nearest distributor please visit our website: www.tapepro.com or call Tapepro Drywall Tools on +61 7 5520 6022.

General Maintenance

To protect and lubricate your Tapepro Flatbox, use a silicon spray. Do not use solvents to clean your Flatbox as they will damage the wiper seals and reduce performance.

Regular wear parts should be replaced as needed.

Flatbox Blade

If the Tapepro Flatbox Blade cannot be adjusted to the required height it will need to be replaced by following these simple steps.

1. Tighten the screws on the blade holder so that the blade is forced out of the blade holder groove. **(FB-10A)**
2. Remove the blade from the blade holder. If there is resistance, a screwdriver can be used to gently lever it out. **(FB-10B)**
3. Remove all dry joint compound from under the blade and in and around the blade holder using a wire brush.
4. Bend the new blade into a slight 'w' shape, this keeps the blade secure. **(FB-10C)**
5. Adjust the screws on the blade holder so the blade is the thickness of a fingernail (1-1.5mm) above the skids. (refer to illustration from 'before use' regarding the width of the Tapepro Flatbox Blade).

Tip: Maintaining and replacing wear parts is made easy with the Tapepro Flatbox Maintenance and Service Kits. **(FB-11)**

All manufacturing faults are covered under warranty. All non wear parts are covered under a 3 year warranty.

